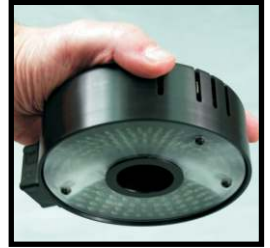
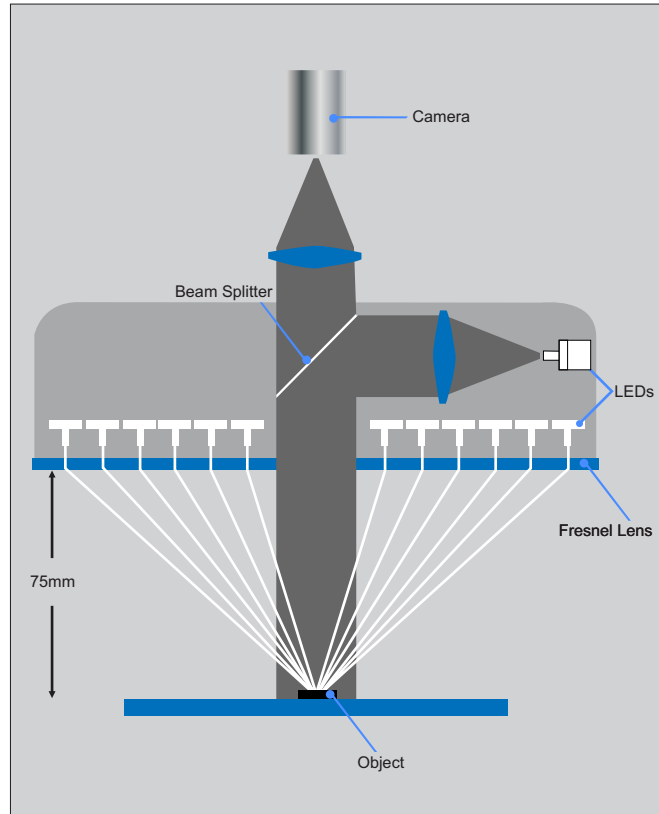


VectorLight™

Inspection and
Measurement Options



VectorLight STD. with oblique illumination
(6 rings, 8 segments)



VectorLight SF with 6 rings, 8
segments and TTL Surface
Illumination *



VectorLight SP, with 6 rings,
7 segments and TTL surface illumination

VectorLight is a versatile lighting solution for select QVI® optical inspection and measurement systems. Its combination of on-axis and oblique surface illumination provides lighting versatility for the toughest imaging applications.

VectorLight uses white light LEDs arranged in six concentric rings. Rings are selectable in any order to adjust the angle of incidence of the light. The rings of LEDs are also selectable as segments. Segments can be selected separately or grouped in any combination to adjust the direction of illumination. These settings, along with independent intensity settings, are all retained in a part program for playback each time the program is run. Constant standoff distance is maintained so as to preserve valuable working clearance.

Specifications

Illumination Source	LEDs with white light only
LED Arrangement	6 independently controlled concentric rings, divided into eight segments, (7 segments on VectorLight SP)
No. of Selectable Segments	8 on standard VectorLight and VectorLight SF 7 on VectorLight SP
Integral Coaxial Surface Light	VectorLight SF and Vector SP

* VectorLight SF requires a 0.8X lens, and decreases the working distance to 66mm

RAM Optical
Instrumentation
RAM

1175 NORTH STREET • ROCHESTER, NY 14621
SALES & SERVICE 585-758-1300 • SUPPORT 877-764-6397 • FAX 585-506-4307

Manufactured by:
**QUALITY
VISION
INTERNATIONAL
INC.**

Rochester, New York, USA

Copyright © 2012 Quality Vision International Inc. All rights reserved. Trademarks are the properties of their respective owners. Specifications subject to change without notice. Printed in USA. Publication Number 795123-1212